



## Wervelroosters inox

SCD-4

# SCD-4



### DESCRIPTION:

The swirl diffusers can be used for various ceiling heights from 2,6 m to 4,0 m. They are suitable for installation in false ceilings.

### CONSTRUCTION:

- Square or round diffuser
- Fixed blades

### MATERIAL:

Steel sheet metal

### COLOUR:

Powder coated RAL 9010 (white)

\* Any RAL colour according to the customer's request.

### INSTALLATION:

With one central screw on the plenum box.

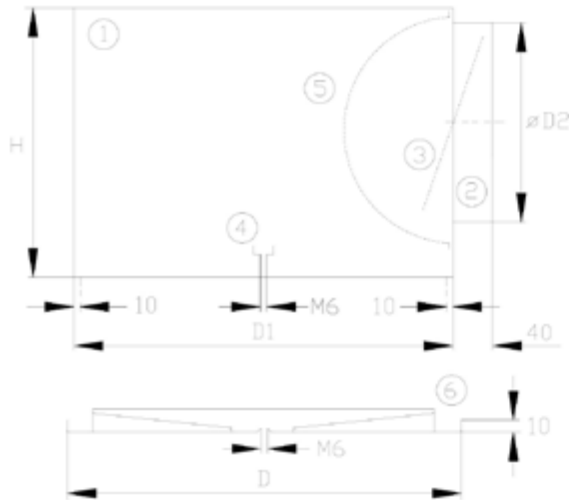
### DIMENSIONS:

Vellikost / Size	D	Ø D	A	D1 , Ø D1	Ø D2		H	
300/250	295	300	240	291	158		230	
400/350	395	400	340	391	158	198	230	270
500/450	495	500	440	491	198	248	270	320
600/250	595	600	240	291	158		230	
600/350	595	600	340	391	158	198	230	270
600/450	595	600	440	491	198	248	270	320
600/550	595	600	540	591	198	248	270	320
625/250	620	625	240	291	158		230	
625/350	620	625	340	391	158	198	230	270
625/450	620	625	440	491	198	248	270	320
625/550	620	625	540	591	198	248	270	320

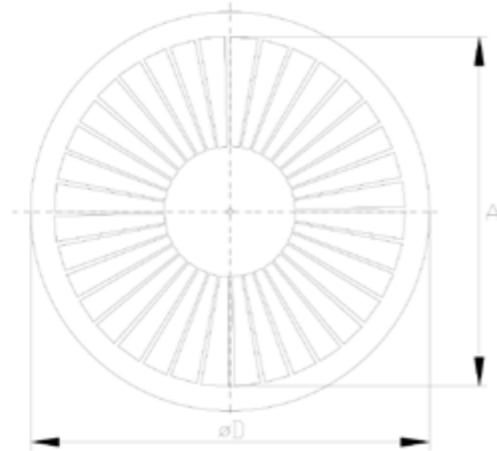
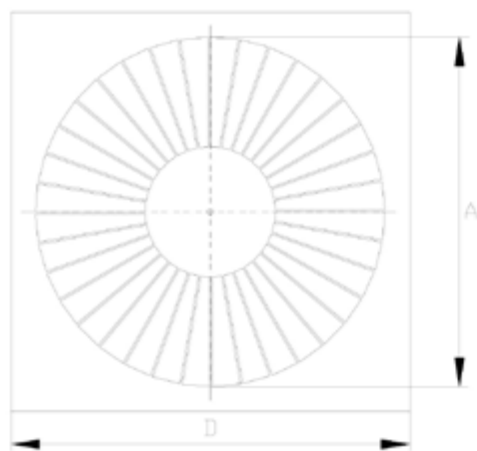
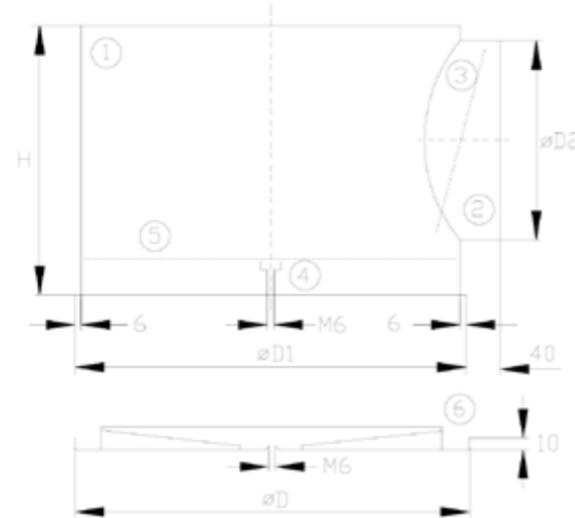


SCD-4

SPB - square



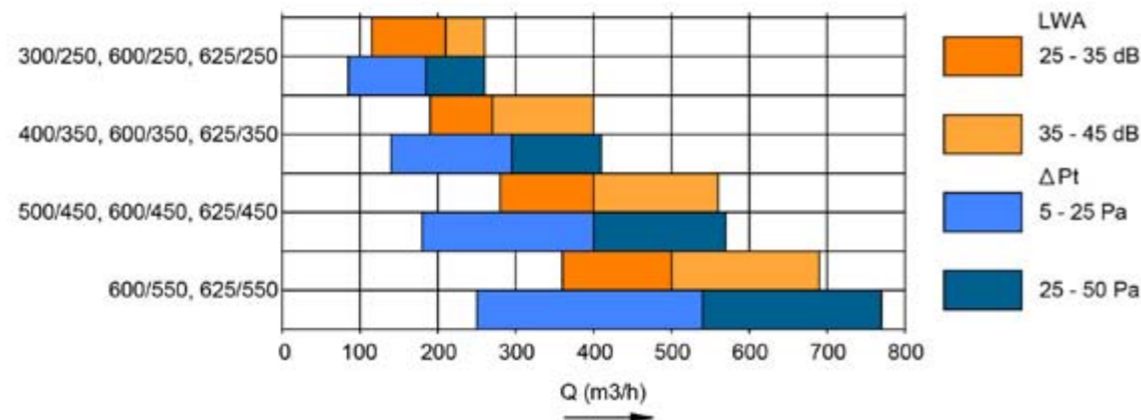
RPB - round



- 1 Plenum box
- 2 Inlet spigot
- 3 Volume control damper
- 4 Traverse
- 5 Perforated dispersing plate
- 6 Diffuser

**FAST SELECTION:**

Data are valid for 100% open volume control damper.



SCD-5

# SCD-5



**DESCRIPTION:**

The swirl diffusers can be used for various ceiling heights from 2,6 m to 4,0 m. They are suitable for installation in false ceilings.

**CONSTRUCTION:**

- Square or round diffuser
- Fixed blades

**MATERIAL:**

Steel sheet metal

**COLOUR:**

Powder coated RAL 9010 (white)

\* Any RAL colour according to the customer's request.

**INSTALLATION:**

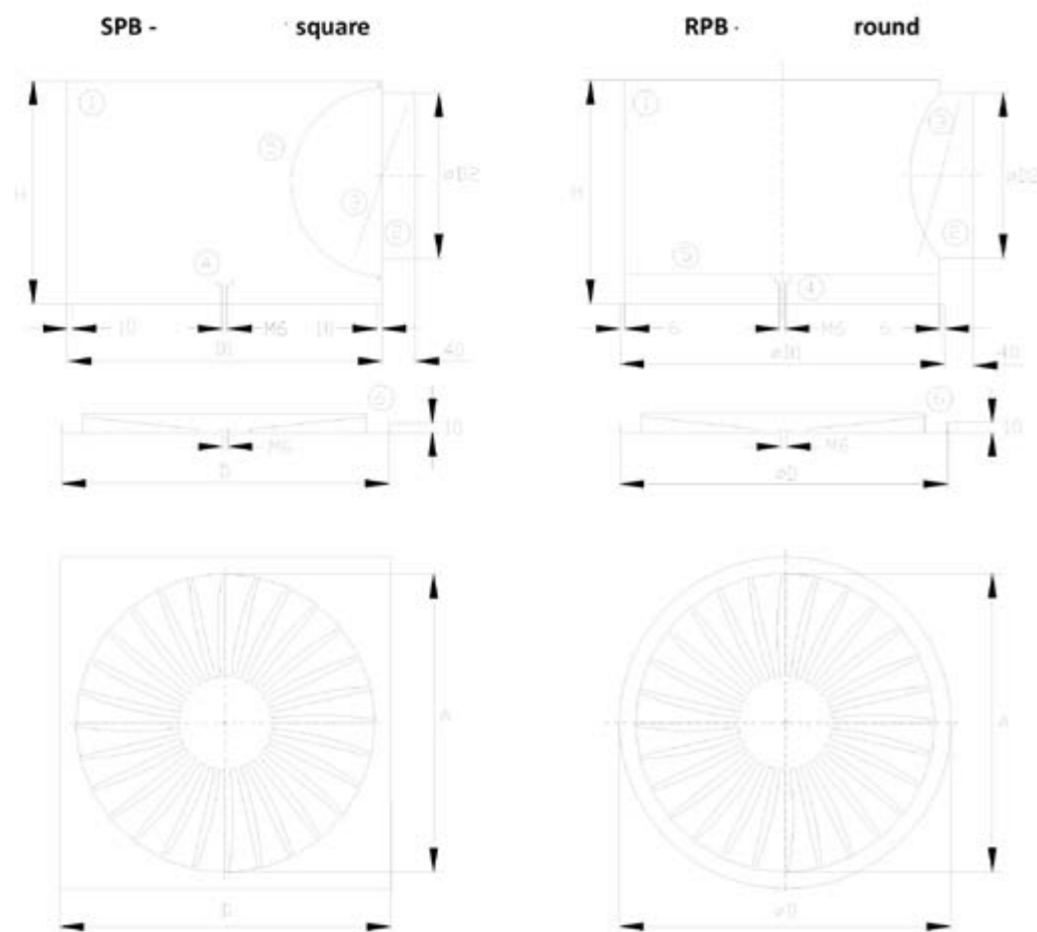
With one central screw on the plenum box.

**DIMENSIONS:**

Velikost / Size	D	Ø D	A	D1, Ø D1	Ø D2	H
300/250	295	300	240	291	158	230
400/350	395	400	340	391	158 198	230 270
500/450	495	500	440	491	198 248	270 320
600/250	595	600	240	291	158	230
600/350	595	600	340	391	158 198	230 270
600/450	595	600	440	491	198 248	270 320
600/550	595	600	540	591	198 248	270 320
625/250	620	625	240	291	158	230
625/350	620	625	340	391	158 198	230 270
625/450	620	625	440	491	198 248	270 320
625/550	620	625	540	591	198 248	270 320



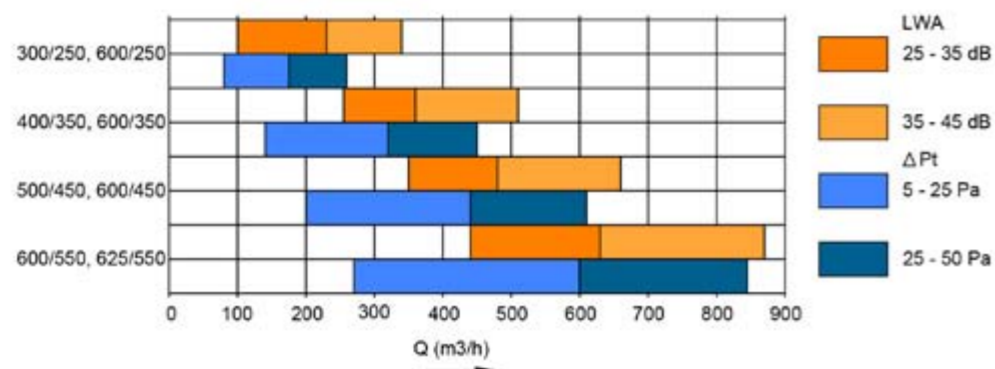
SCD-5



- 1 Plenum box
- 2 Inlet spigot
- 3 Volume control damper
- 4 Traverse
- 5 Perforated dispersing plate
- 6 Diffuser

### FAST SELECTION:

Data are valid for 100% open volume control damper.



SCD-6

# SCD-6



### DESCRIPTION:

The swirl diffusers can be used for various ceiling heights from 2,6 m to 3,5 m. They are suitable for installation in false ceilings.

### CONSTRUCTION:

- Square or round diffuser
- Fixed blades

### MATERIAL:

Steel sheet metal

### COLOUR:

Powder coated RAL 9010 (white)

\* Any RAL colour according to the customer's request.

### ACCESSORIES:

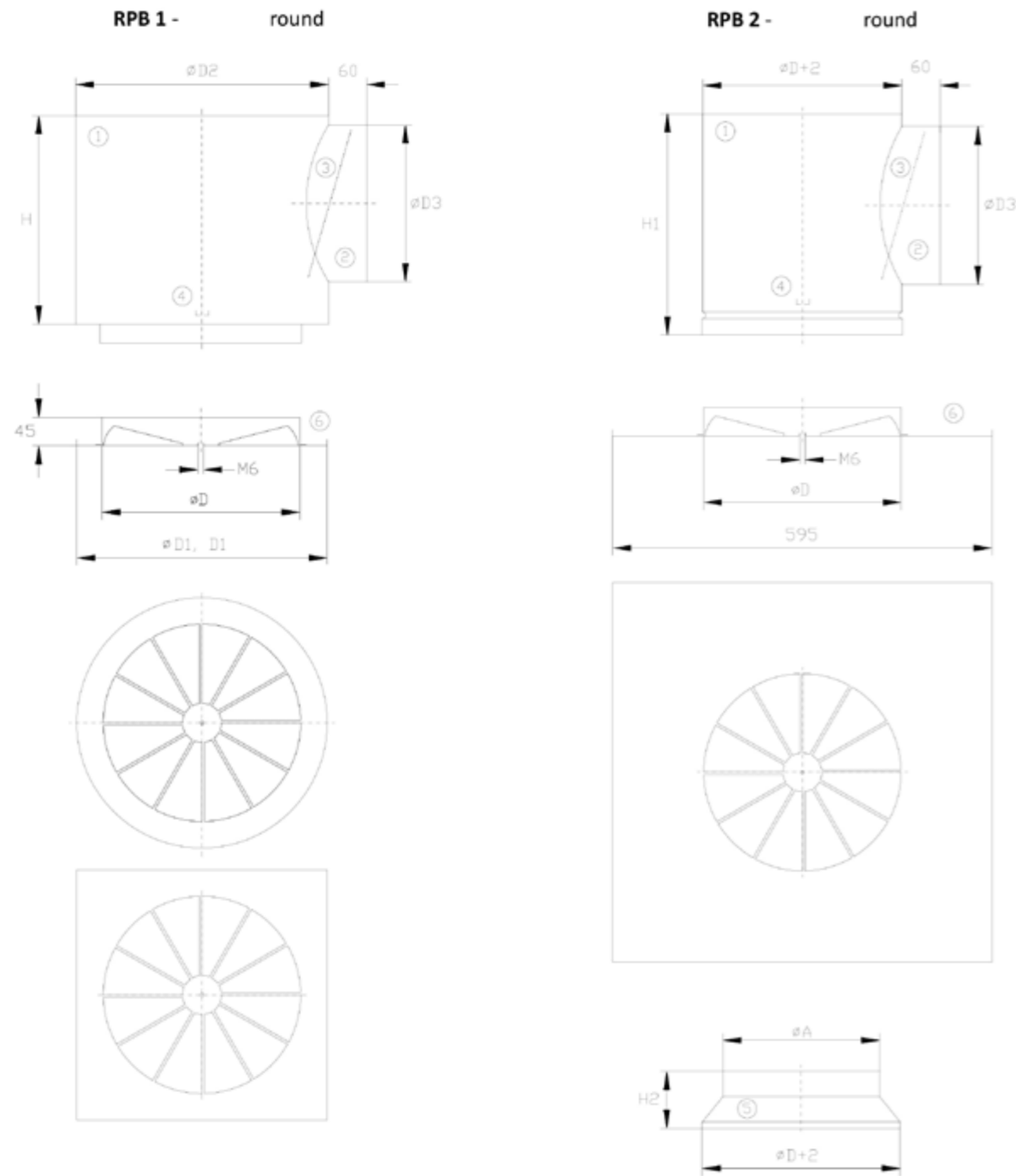
- RD - spigot

### DIMENSIONS:

Velikost / Size	Ø D	Ø D1, D1	Ø D2	Ø D3	Ø A	H	H1	H2
100	98	140	180	78	98	180	208	70
125	123	160	180	98	98	180	208	70
160	158	200	200	123	123	205	223	70
180	178	250	250	158	158	240	258	70
200	198	250	250	158	158	240	258	80
250	248	315	315	198	198	280	298	80
315	313	400	400	248	248	330	348	80
400	398	500	500	313	313	395	413	90



SCD-6



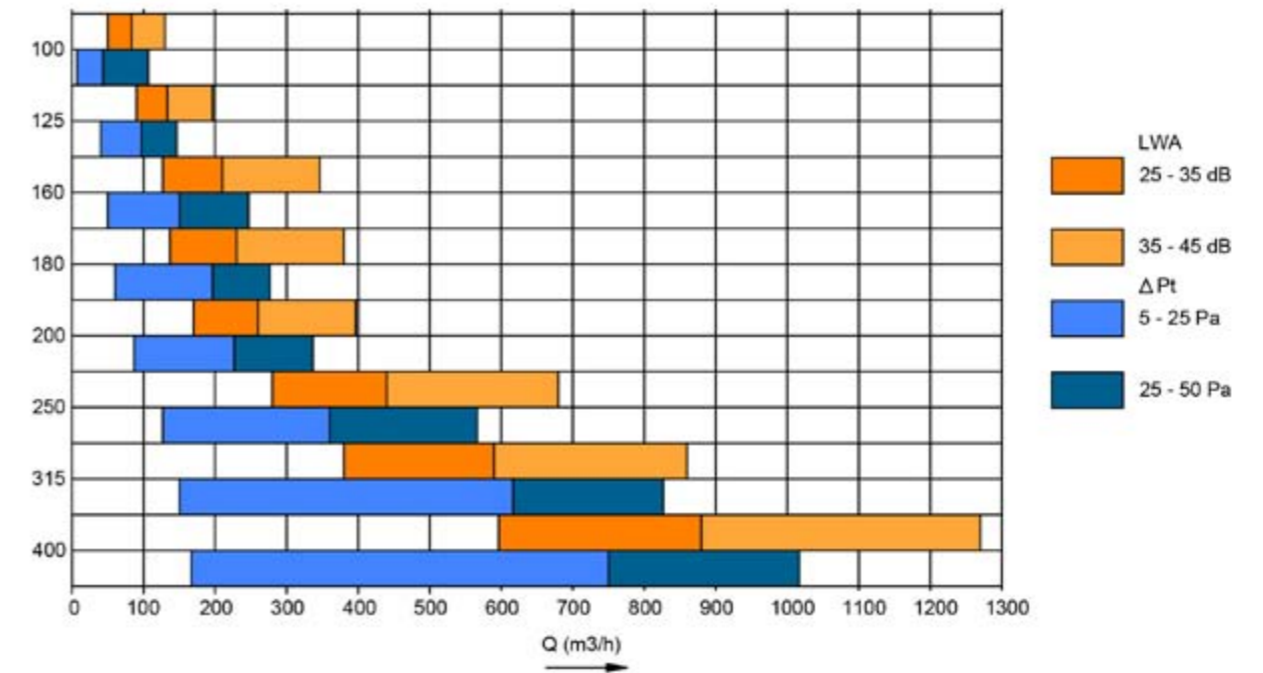
- 1 Plenum box
- 2 Inlet spigot
- 3 Volume control damper
- 4 Traverse
- 5 Spigot
- 6 Diffuser



SCD-6

FAST SELECTION:

Data are valid for 100% open volume control damper.





SCD-7

# SCD-7



**DESCRIPTION:**

The swirl diffusers are diffusers with small to medium dimensions. They can be used for low and medium ceiling heights from 2,6 m to 3,5 m. They are suitable for installation in false ceilings.

**CONSTRUCTION:**

- Nozzle shaped casing
- Fixed blades

**MATERIAL:**

Steel sheet metal

**COLOUR:**

Powder coated RAL 9010 (white)

\* Any RAL colour according to the customer's request.

**ACCESSORIES:**

- PP - perforated plate placed on the neck of the diffuser
- RD - spigot

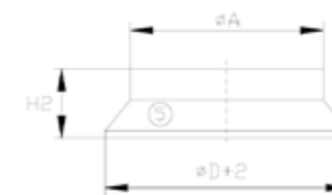
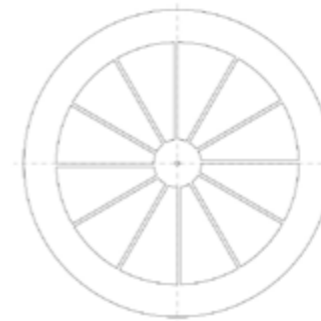
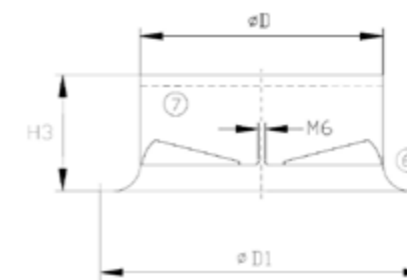
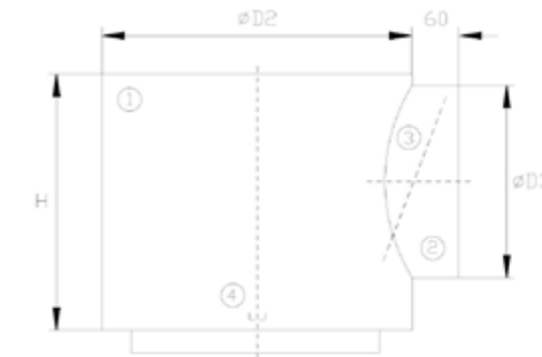
**DIMENSIONS:**

Velikost / Size	∅ D	∅ D1	∅ D2	∅ D3	∅ A	H	H1	H2	H3
100	98	150	180	98	78	180	208	70	65
125	123	185	180	98	98	180	208	70	65
160	158	220	200	123	123	205	223	70	80
200	198	280	250	158	158	240	258	80	105
250	248	345	315	198	198	280	298	80	120
315	313	425	400	248	248	330	348	80	150
400	398	530	500	313	313	395	413	90	180

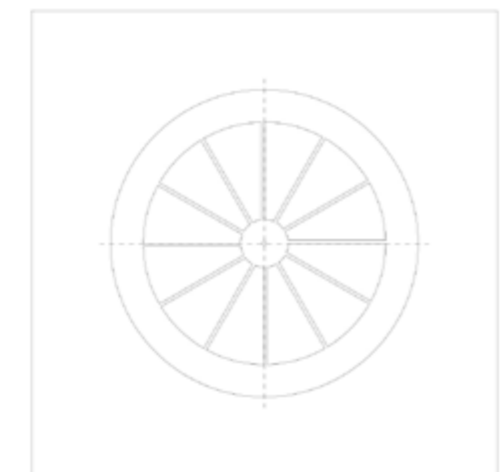
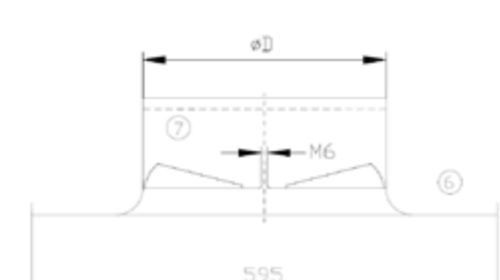
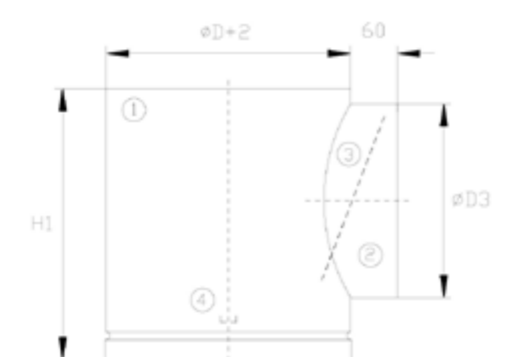


SCD-7

RPB 1 - round



RPB 2 - round



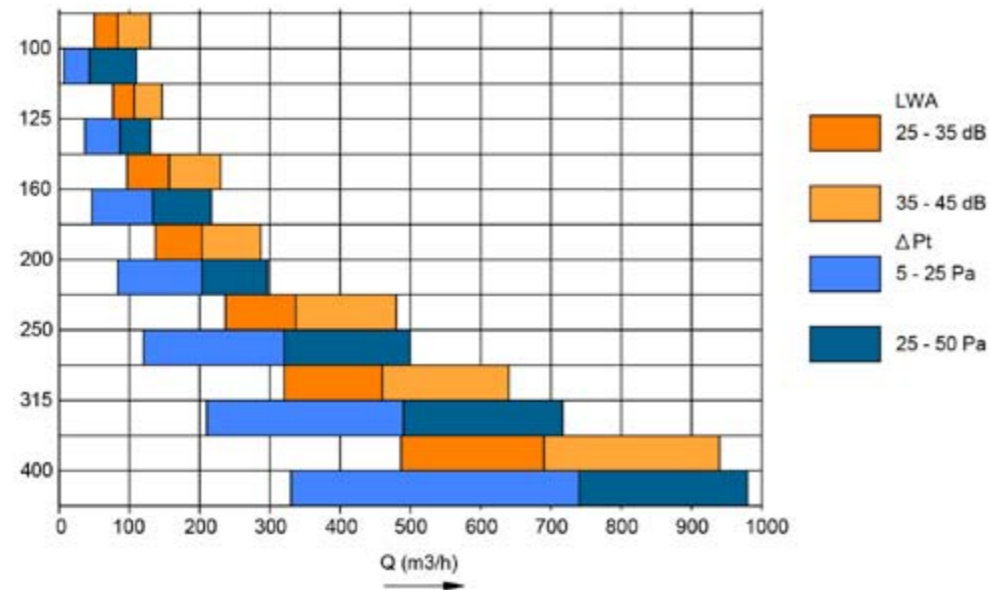
- 1 Plenum box
- 2 Inlet spigot
- 3 Volume control damper
- 4 Traverse
- 5 Spigot
- 6 Diffuser
- 7 Perforated dispersing plate



SCD-7

FAST SELECTION:

Data are valid for 100% open volume control damper.



SCD-8

# SCD-8



**DESCRIPTION:**

The swirl diffusers are designed for air-conditioning of spaces with ceiling height from 2,6 m to 4,0 m and temperature difference between supply and room air +/-10 K. Induction of the air inside room occurs very quickly due to rotary swirling motion of the air discharge. They are suitable for installation in false ceilings.

**CONSTRUCTION:**

- Square or round diffuser
- Plastic deflectors (for supply)
- Radial deflector arrangement

**MATERIAL:**

- Sheet steel (diffuser, plenum box)
- Plastic (deflectors)

**COLOUR:**

Powder coated RAL 9010 (white)

\* Any RAL colour according to the customer's request.

**INSTALLATION:**

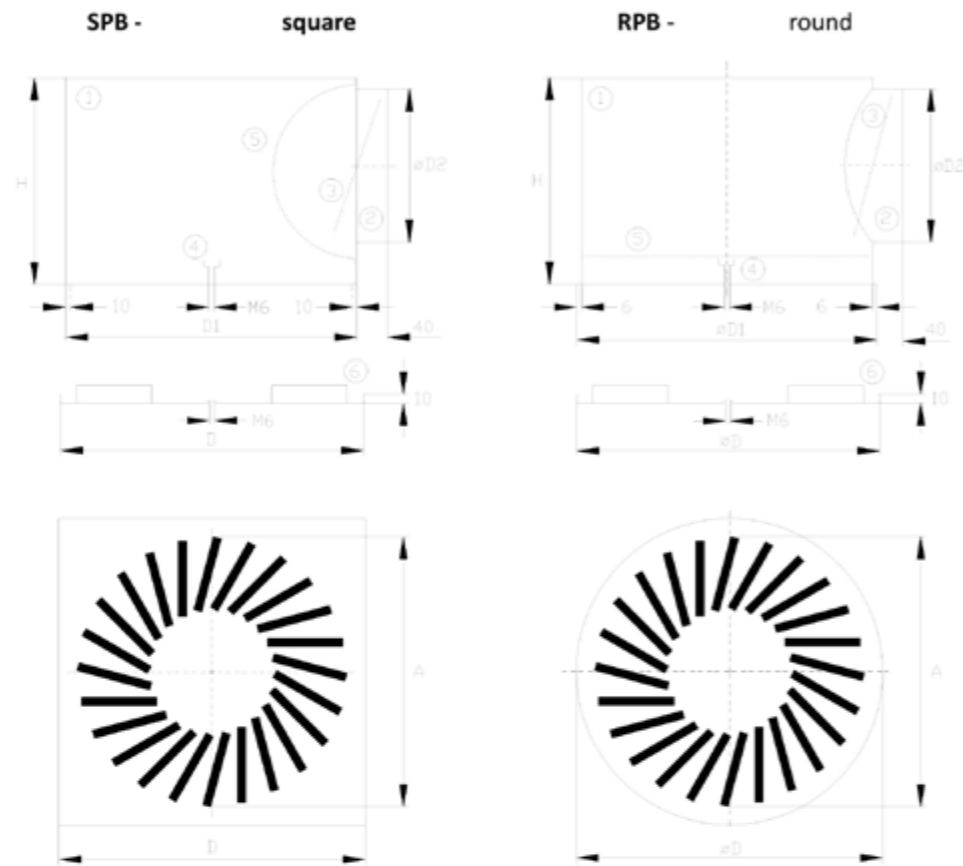
With one central or four\* side screws on the plenum box.

\* Installation with four side screws only for dimension 800/72.



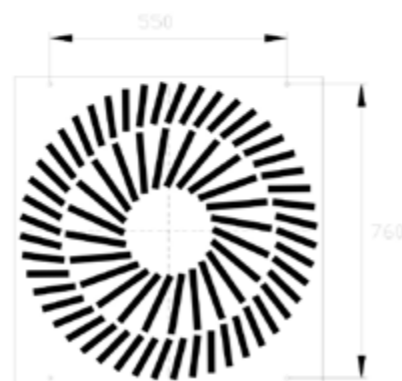
SCD-8

DIMENSIONS:



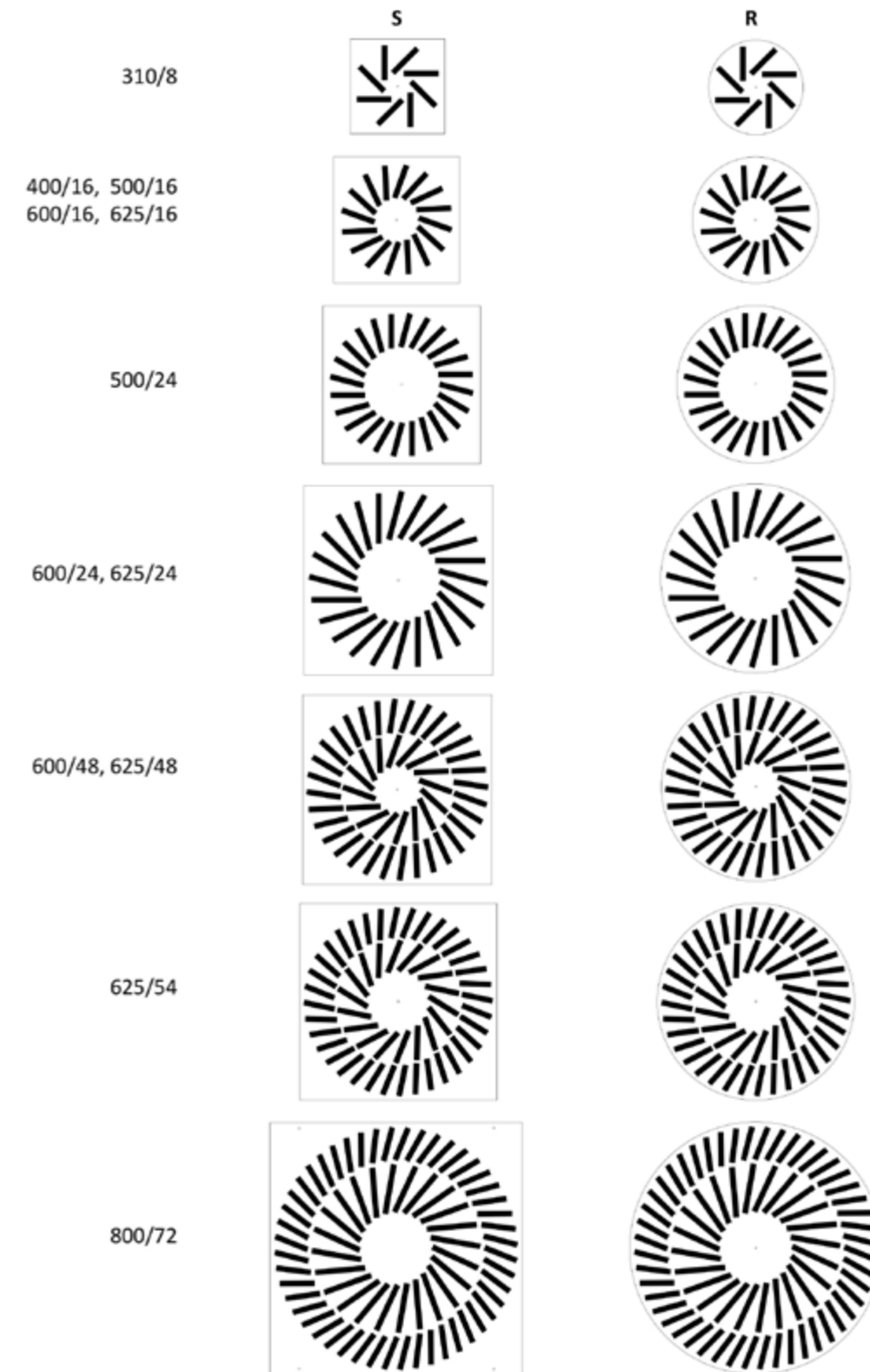
- 1 Plenum box
- 2 Inlet spigot
- 3 Volume control damper
- 4 Traverse
- 5 Perforated dispersing plate
- 6 Diffuser

Fastening with four screws S4:



SCD-8

FRONT PLATE SHAPES AND DIMENSIONS:



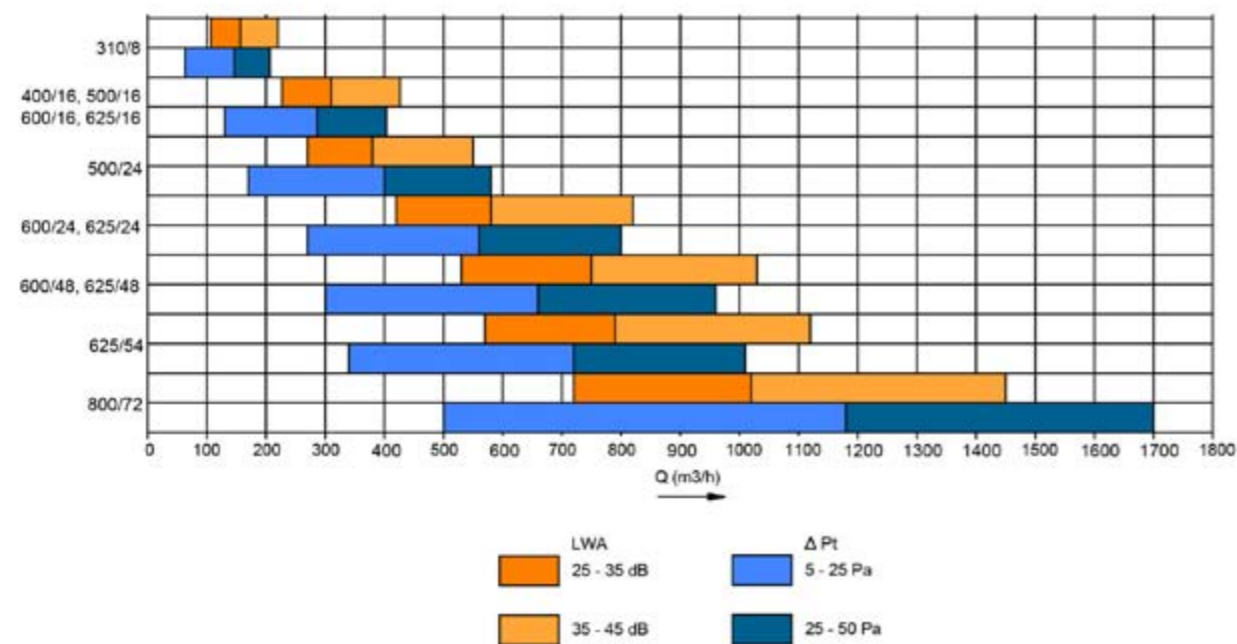


SCD-8

Velikost / Size	D	Ø D	Ø D1, D1	Ø D2	H	A
310/8	305	310	301	158	230	275
400/16	395	400	391	158	198	230
500/16	495	500	391	158	198	230
600/16	595	600	391	158	198	230
625/16	620	625	391	158	198	230
500/24	495	500	491	198	248	270
600/24	595	600	591	198	248	270
625/24	620	625	591	198	248	270
600/48	595	600	591	198	248	270
625/48	620	625	591	198	248	270
625/54	620	625	616	248	320	590
800/72	795	800	791	313	348	385

**FAST SELECTION:**

Data are valid for 100% open volume control damper.



SCD-9

# SCD-9



**DESCRIPTION:**

The swirl diffusers are designed for air-conditioning of spaces with ceiling height from 2,6 m to 4,0 m, and temperature difference between supply and room air +/-10 K. Induction of room air occurs very quickly due to rotary swirling motion of the air discharge. They are suitable for installation in false ceilings.

**CONSTRUCTION:**

- Square or round diffuser
- Plastic deflectors (for supply)
- Square or radial deflector arrangement

**MATERIAL:**

- Steel sheet metal (diffuser, plenum box)
- Plastic (deflectors)

**COLOUR:**

Powder coated RAL 9010 (white)

\* Any RAL colour according to the customer's request.

**INSTALLATION:**

With one central or four\* side screws on the plenum box.

\* Installation with four side screws only for dimension 800.



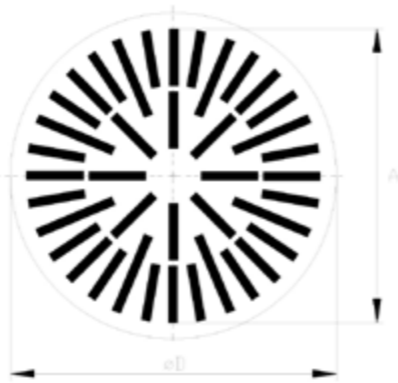
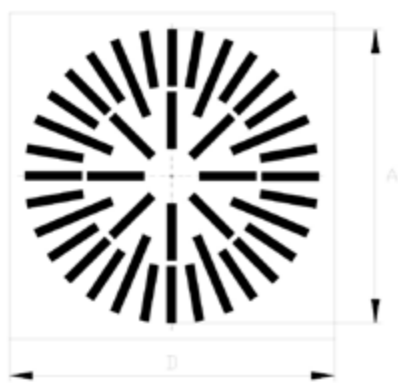
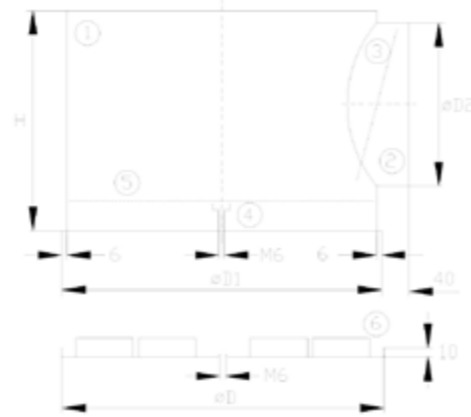
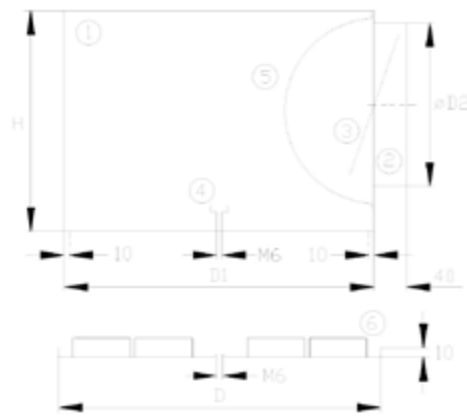


SCD-9

DIMENSIONS:

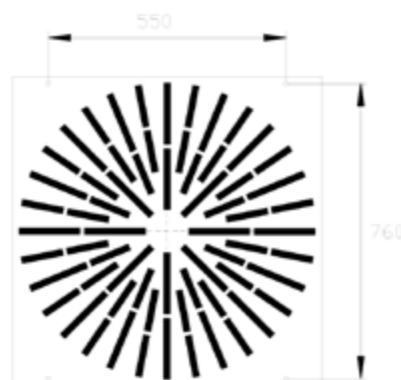
SPB - square

RPB - round



- 1 Plenum box
- 2 Inlet spigot
- 3 Volume control damper
- 4 Traverse
- 5 Perforated dispersing plate
- 6 Diffuser

Fastening with four screws S4:



SCD-9

FRONT PLATE SHAPES AND DIMENSIONS:

SR

RR

SS

310



400



500



600

625



800



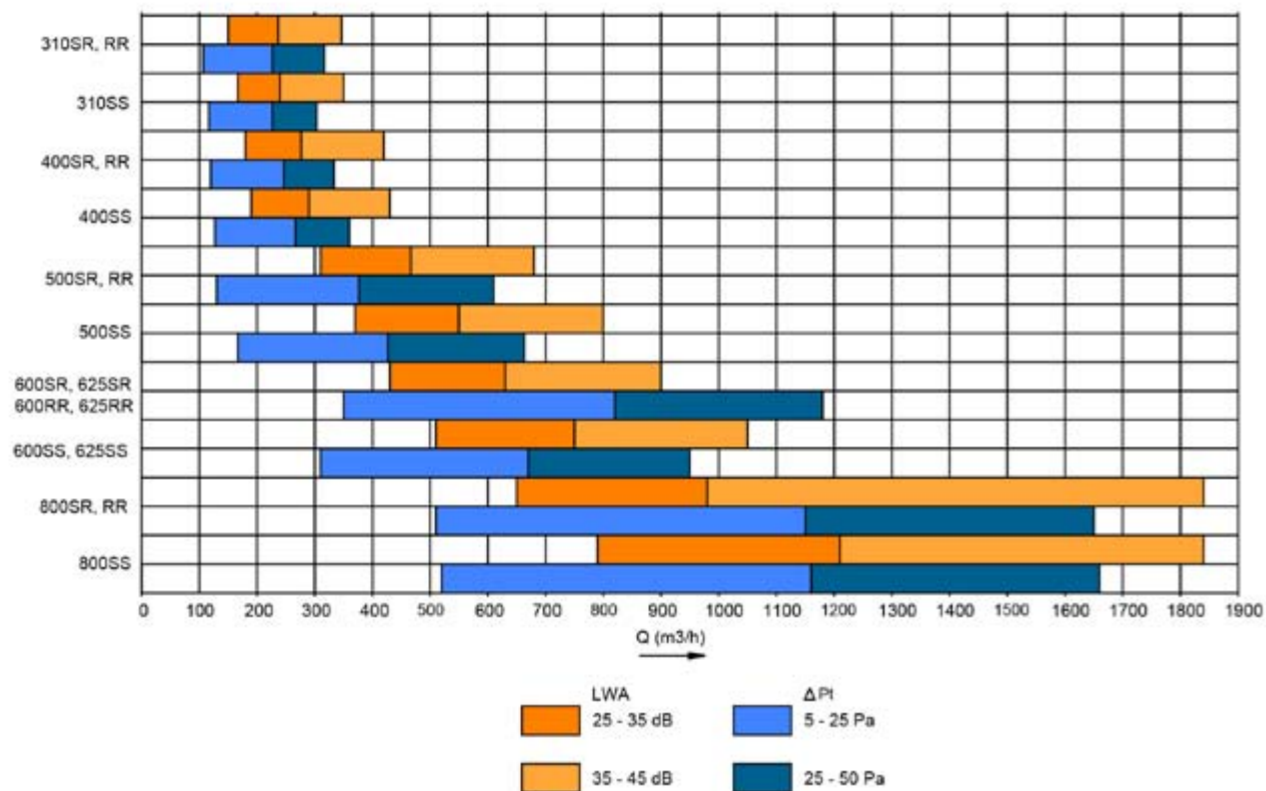


SCD-9

Velikost / Size	D	Ø D	Ø D1, D1	Ø D2	H	A
310	305	310	301	158	230	289
400	395	400	391	158	230	270
500	495	500	491	198	248	270
600	595	600	591	198	248	270
625	620	625	591	198	248	270
800	795	800	791	313	348	385

### FAST SELECTION:

Data are valid for 100% open volume control damper.



SCD-10

# SCD-10



### DESCRIPTION:

The swirl diffusers are designed for air-conditioning of spaces with ceiling height from 2,6 m to 4,0 m and temperature difference between supply and room air +/-10 K. Induction of room air occurs very quickly due to rotary swirling motion of the air discharge. They are suitable for installation in false ceilings.

### CONSTRUCTION:

- Square or round diffuser
- Plastic nozzles
- Square or radial nozzle arrangement

### MATERIAL:

- Steel sheet metal (diffuser, plenum box)
- Plastic (nozzles)

### COLOUR:

Powder coated RAL 9010 (white)

\* Any RAL colour according to the customer's request.

### INSTALLATION:

With one central or four\* side screws on the plenum box.

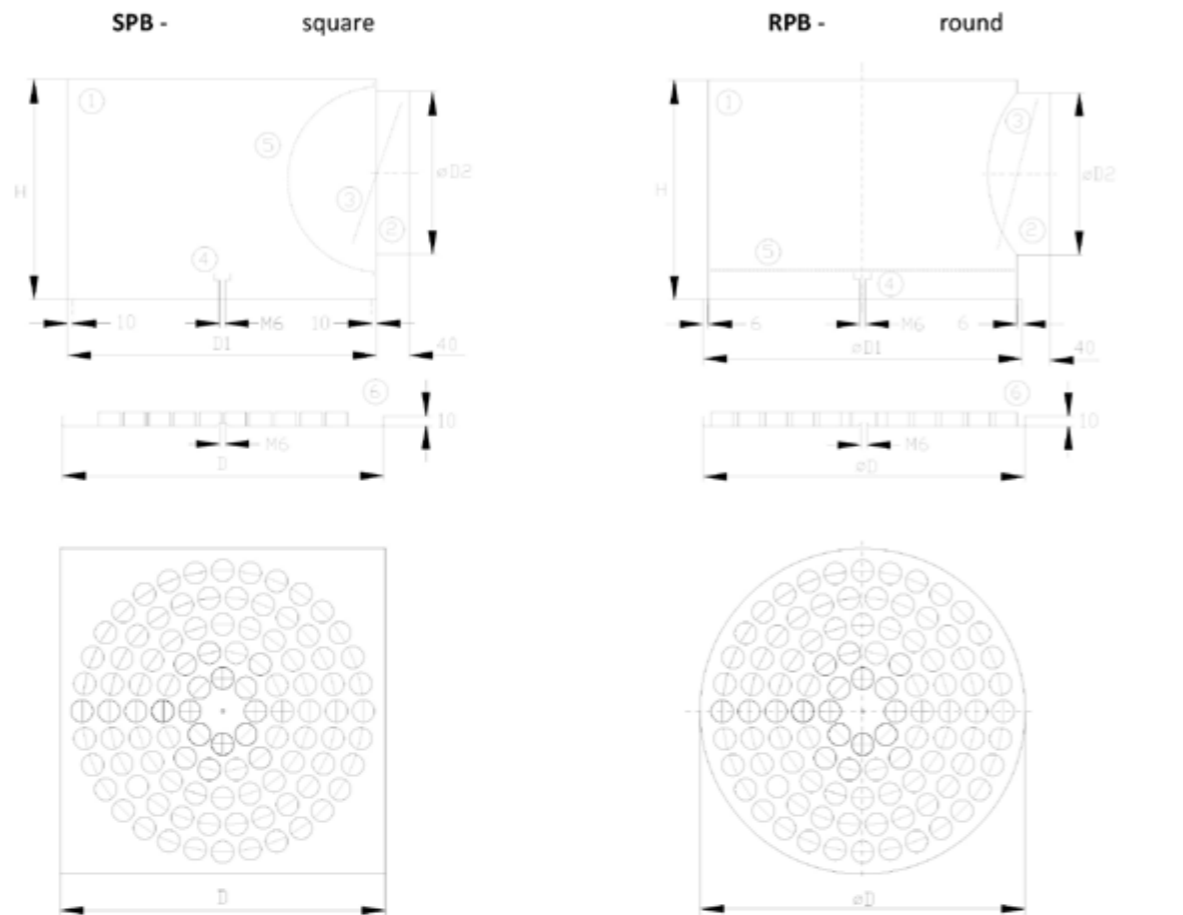
\* Installation with four side screws only for dimension 600 and 625.

### DIMENSIONS:

Velikost / Size	D	Ø D	Ø D1, D1	Ø D2	H
310	305	310	301	158	230
400	395	400	391	158	198
500	495	500	491	198	248
600	595	600	591	198	248
625	620	625	591	198	248

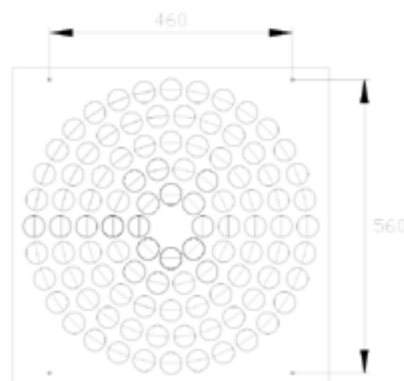


SCD-10



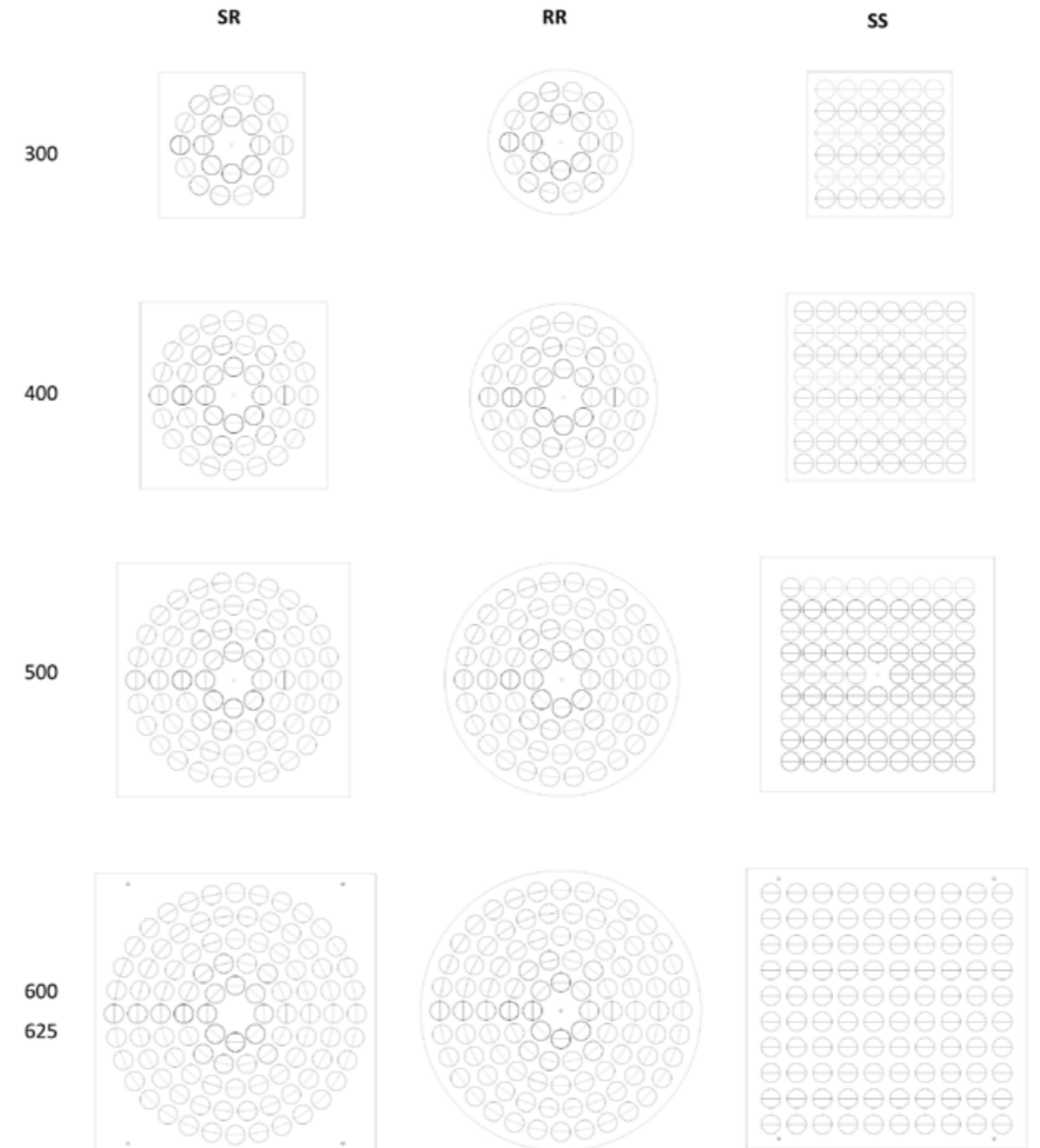
- |   |                     |                             |
|---|---------------------|-----------------------------|
| 1 | Priključna komora   | Plenum box                  |
| 2 | Priključek          | Inlet spigot                |
| 3 | Regulacijska loputa | Volume control damper       |
| 4 | Trazverza           | Traverse                    |
| 5 | Perforirana plošča  | Perforated dispersing plate |
| 6 | Difuzor             | Diffuser                    |

Fastening with four screws S4:



SCD-10

FRONT PLATE SHAPES AND DIMENSIONS:





## Wervelroosters inox

SCD-10

### FAST SELECTION:

\* Data are valid for 100% open volume control damper.

