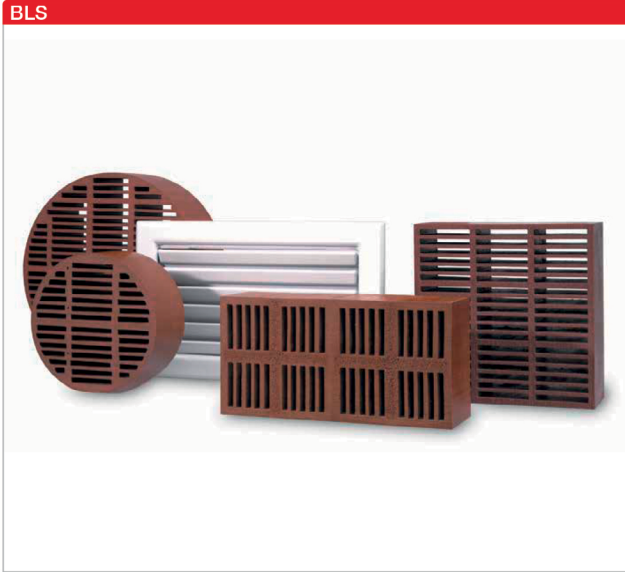




Rond brandrooster



Fire protection ventilation tiles for the supply and extract ventilation of closed rooms and chambers to be protected against the spread of fire and smoke, such as e.g. installation shafts and cable ducts. They allow a constant, static air exchange which prevents heat accumulation in the closed chambers. The tiles can also be used as inflow openings in crucial corridor walls (emergency escape routes), unless the openings are in the lower wall area.

Special features

- Fire resistance class F30 to F120 according to DIN 4102 (see box on right).
- Maintenance-free and inspection-free, no moving parts.
- Simple installation.
- Moisture-resistant, largely resistant to oils, petrol and weak acids.
- Use in individual cases on the basis of a project-related type approval (VBG).

■ Installation does not affect the classification of the construction component.

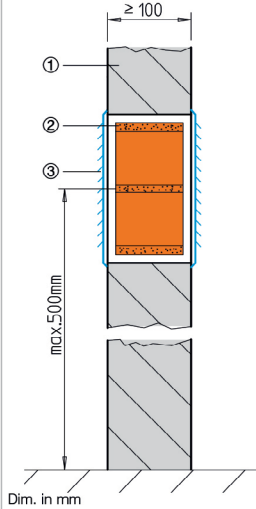
The ventilation tiles are made of organic intumescent material, which foams when exposed to heat, seals openings, slots and joints and thus prevents the passage of fire and smoke.

■ Each tile is delivered with two ventilation grilles made of galvanised steel sheet. After inserting the tile, the grilles are to be placed over it on one or both sides as mechanical protection and optical cladding, i.e. screwed to the building structure (wall).

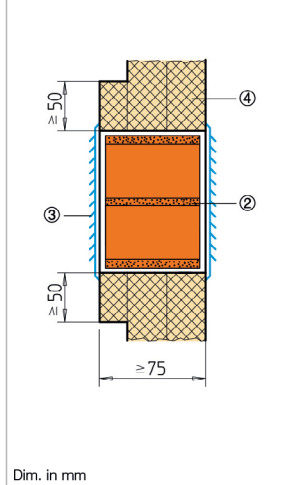
■ Rectangular fire protection ventilation tiles must be installed horizontally.

■ In case of walls of lower thickness, on-site doubling with fibre silicate frame in the BLS area.

Installation in brickwork and concrete walls F30 – F120



Installation in classified partition wall and cable duct F30 and F90



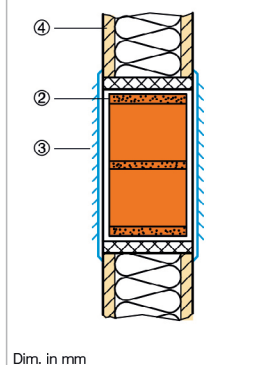
Legend

- ① Brickwork
- ② Ventilation tile
- ③ Ventilation grille, double-sided
- ④ Fibre silicate boards

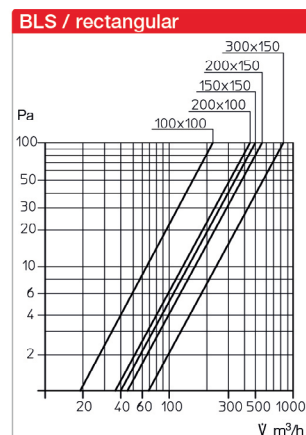
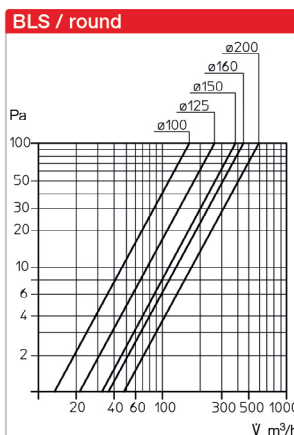
Fire resistance class	Ventilation tile installation in	Thick. mm
F 30	Brickwork and concrete walls. Lightweight partition and shaft walls, classified cable ducts.	75
F 90 / F 120*	Brick and concrete walls. Lightweight partition, classified shaft walls and cable ducts.	75

* Double-sided cover grille.

Installation in classified partition wall and cable duct F30 – F120



Volume flows – Differential pressure



Product range, dimensions in mm

Ventilation module		Install. open.		Wgt.	Free ventilation	Cover grille			
Ref. no.	Type	Ø	D	max. i.L.	ca. kg	cross-sect. cm²	W	H	
02712	BLS 100	100	75	Ø 103	0.21	37	200	200	
02715	BLS 125	125	75	Ø 128	0.50	56	200	200	
02767	BLS 150	150	75	Ø 153	0.60	85	200	200	
02718	BLS 160	160	75	Ø 163	0.67	102	255	255	
02721	BLS 200	200	75	Ø 204	1.12	158	255	255	
		W	H	D			W	H	
02766	BLS 100 / 100	93	93	75	103 x 103	0.38	35	200	200
02724	BLS 150 / 150	150	150	75	153 x 153	0.80	115	255	255
02727	BLS 200 / 100	186	93	75	203 x 103	0.75	69	305	155
02730	BLS 200 / 150	200	150	75	203 x 153	1.15	153	305	200
02733	BLS 300 / 150	300	150	75	303 x 153	1.56	230	405	205