



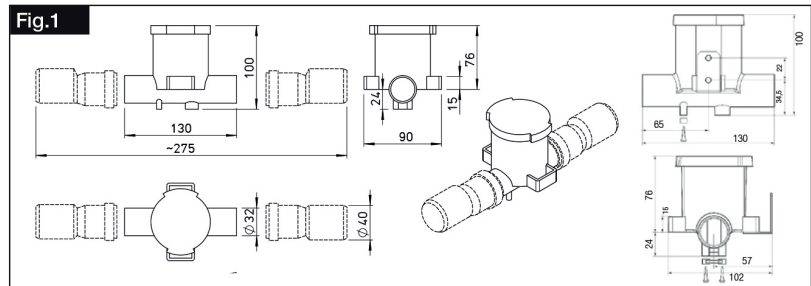
Balsifon voor vloergemonteerde AIR1-apparaten en koelregisters

INSTALLATION AND OPERATING INSTRUCTIONS

1.1 Technical data

Material	Polypropylene (PP)
Max. positive pressure	1500 Pa
Max. negative pressure	-1500 Pa
Connection	DN32 / DN40
Outlet	DN32 / DN40

2.1 Dimension drawing



3.1 Connection

ATTENTION

Material damage due to incorrect connection!

The drainage pipe route must not rise above the siphon!

For outdoor applications, a frost proof installation must be ensured.

NOTE

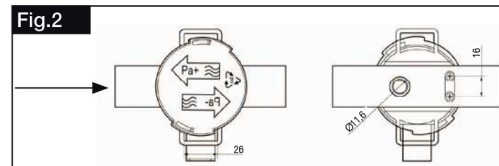
Existing drainage systems shall not be connected directly to the sewage system.

Use the pipe adapter 32-32 mm for siphon – condensation outlet pipe connection (Siphon delivery does not contain adapter part).

3.2 Installation direction of siphon

NOTE

Negative/positive pressure in the unit, connect drain outlet of AIR1 unit to this side of ball siphon/trap.

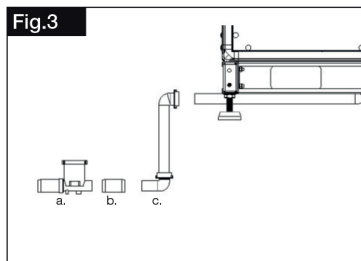


3.3 Connection for negative pressure conditions

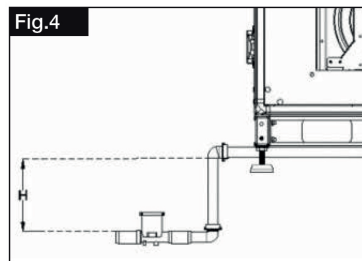
The ball siphon is designed for the maximum negativ pressure of -1500 Pa. In case of pressure below -800 Pa, elbow must be extended to ensure required connection height. Elbow height (H) can be adapted in accordance with the following table.

NOTE

If the negativ pressure is below -800 Pa (<800 Pa), to ensure necessary water trap height (H), lift the device.



- a. Ball siphon
- b. Pipe adapter 32 mm (on site)
- c. Elbow (Needed if pressure is below -800 Pa, on site)



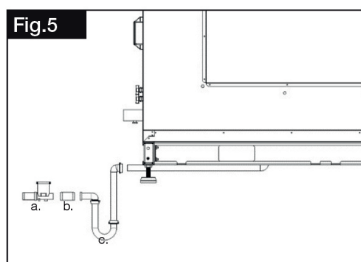
Negative pressure	Height H
-1500 Pa	110 mm
-1400 Pa	100 mm
-1300 Pa	90 mm
-1200 Pa	80 mm
-1100 Pa	70 mm
-1000 Pa	60 mm
-800 Pa	40 mm
-600 Pa	20 mm
< 600 Pa	-

3.4 Connection for positive pressure conditions

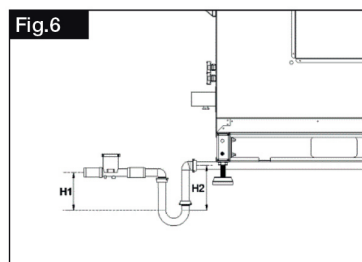
The ball siphon is designed for the maximum positive pressure of 1500 Pa. The height of the elbow is set depending on the pressure in the system. Elbow heights (H1-H2) can be adapted in accordance with following table.

NOTE

If the positive pressure is above 600 Pa (>600 Pa), to ensure necessary water trap heights (H1-H2), lift the device.



- a. Ball siphon
- b. Pipe adapter 32 mm (on site)
- c. Elbow (Needed if pressure is above 600 Pa, on site)



Positive Pressure	Height H2	Height H1
1500 Pa	150 mm	110 mm
1400 Pa	140 mm	100 mm
1300 Pa	130 mm	90 mm
1200 Pa	120 mm	80 mm
1100 Pa	110 mm	70 mm
1000 Pa	100 mm	60 mm
800 Pa	80 mm	40 mm
600 Pa	60 mm	20 mm

4.1 Service and maintenance of siphon

It is recommended to check the siphon pipes for any contamination and damage every 6 months.