

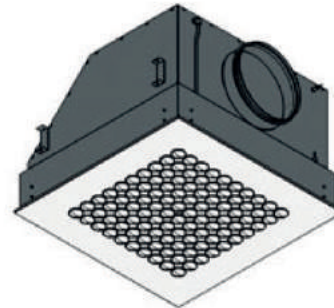


## Clean Room plenum voor hepa filter

### CEILING HEPA FILTER UNITS

#### DESCRIPTION:

Absolute filters ensure the supply of sterile air that is free of microorganisms, bacteria and viruses. Ceiling module with HEPA filter and with diffuser can be used for supply or exhaust of absolutely clean, filtrated air (medicine, biology, pharmaceutical and food industry, precision mechanics).



#### CONSTRUCTION:

- Casing
- Diffuser
- UPSTREAM connection
- $\Delta p$  connection
- HEPA filter



#### COLOUR:

Powder coated RAL 9010 (white)

\* Any RAL colour according to the customer's request.

#### MATERIAL:

- Steel sheet metal (casing, diffuser)
- INOX AISI 304 (filter holders)

#### SUPPLEMENTS:

Round shut off damper

#### DIMENSIONS:

Filter size	A	A1	A2	B	B1	B2	H	H1	H2	H3	Ø D
305x305x80	360	355	250	360	355	100	250	337	237	290	158
305x610x80	360	355	400	665	660	100	290	377	237	290	198
457x457x80	512	507	380	512	507	100	290	377	237	290	198
535x535x80	600	595	480	600	595	100	340	427	237	290	248
610x610x80	665	660	560	665	660	160	340	427	237	350	248
610x915x80	665	660	850	970	965	160	405	492	237	350	313
610x1220x80	665	660	1000	1275	1270	200	445	532	237	390	353

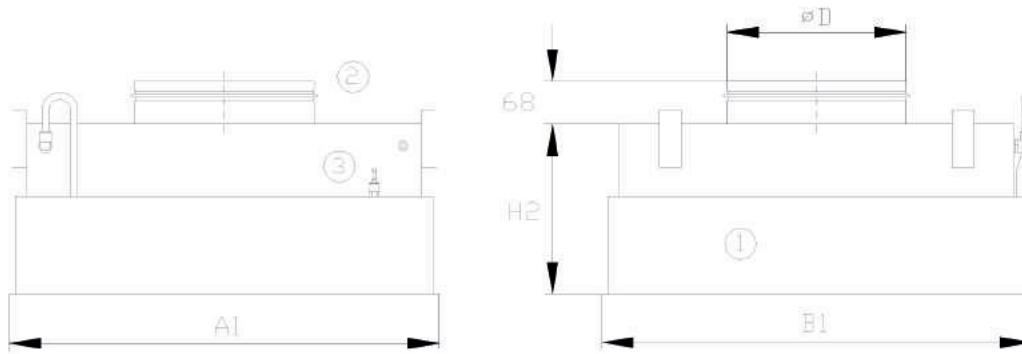
#### FAST SELECTION:

Filter Size	Filter with GEL Gasket H14 by EN 1822-1		Filter with PO/Flat Gasket H13 by EN 1822-1		Filter with PO/Flat Gasket H14 by EN 1822-1	
	Nominal Airflow (m3/h)	Initial Pressure drop on Filter (Pa)	Nominal Airflow (m3/h)	Initial Pressure drop on Filter (Pa)	Nominal Airflow (m3/h)	Initial Pressure drop on Filter (Pa)
305x305x80	150	125	300	250	150	120
305x610x80	300	125	600	250	300	120
457x457x80	340	125	680	250	340	120
535x535x80	480	125	950	250	475	120
610x610x80	600	125	1200	250	600	120
610x915x80	900	125	1600	250	800	120
610x1220x80	1200	125	2100	250	1050	120

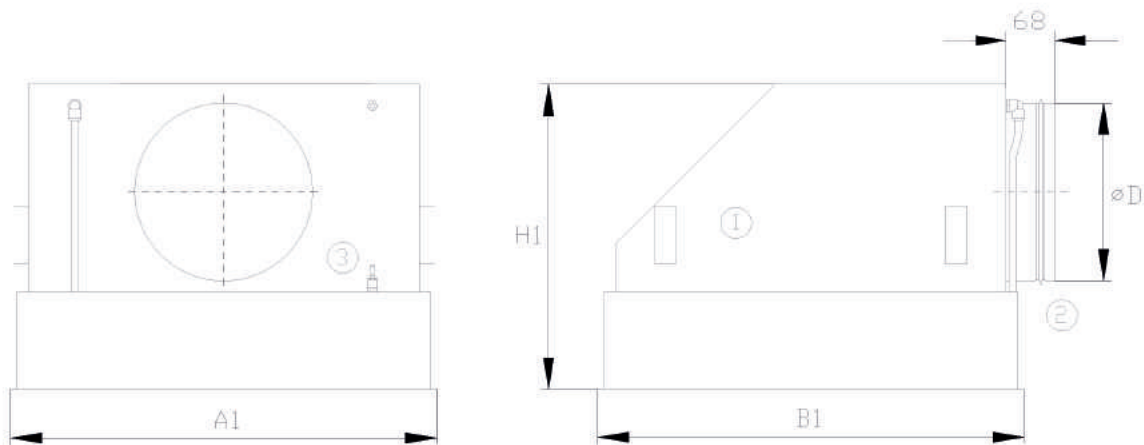


## Clean Room plenum voor hepa filter

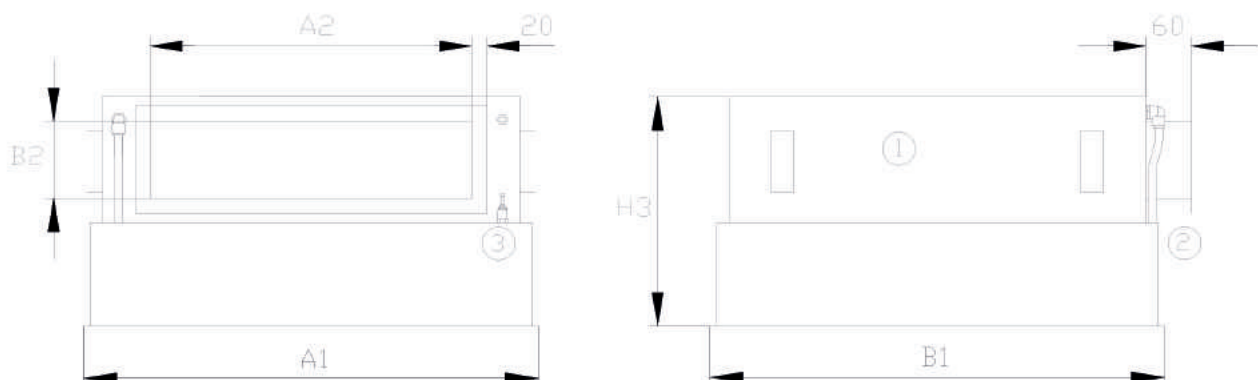
HFU/VR



HFU/SR



HFU/SS

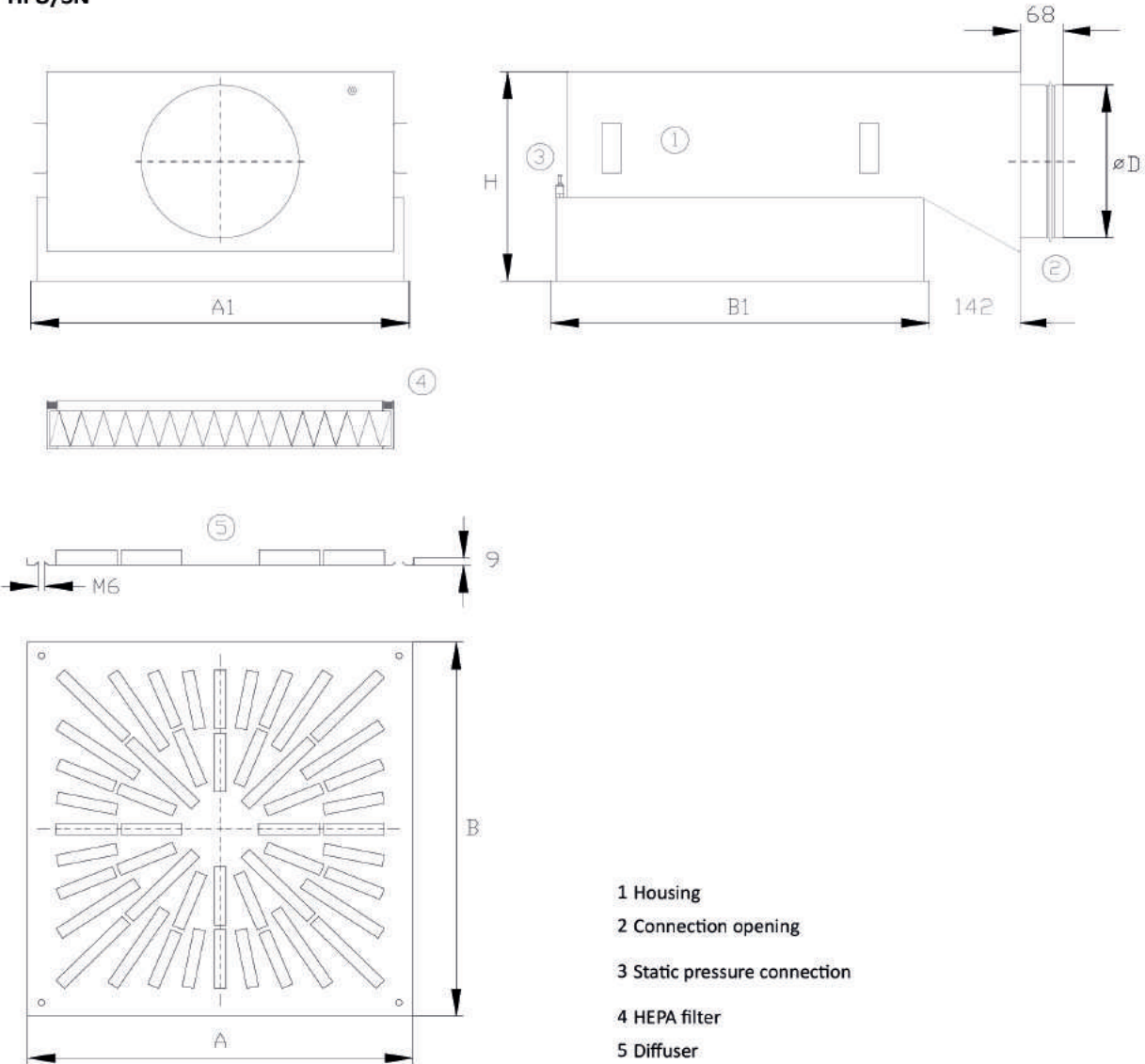


- 1 Housing
- 2 Connection opening
- 3 Static pressure connection



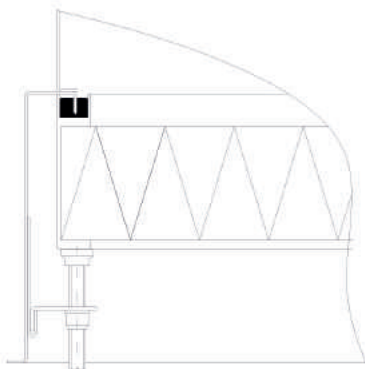
## Clean Room plenum voor hepa filter

HFU/SN

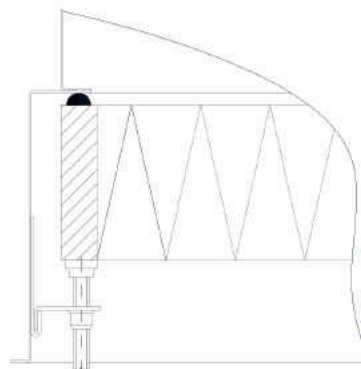


### FILTER FIXING DETAILS

Filter with GEL gasket (G)



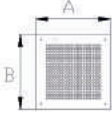

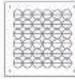



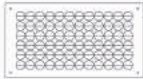


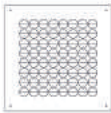
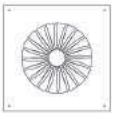
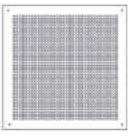
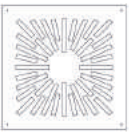
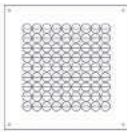
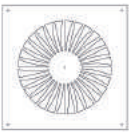
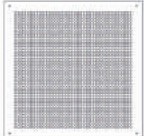

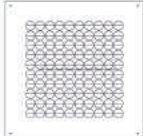
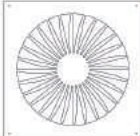
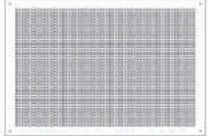
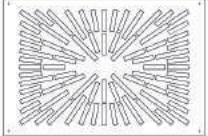

Filter with dry gasket (PO)





## Clean Room plenum voor hepa filter

### FILTER AND FRONT PLATE COMBINATIONS

FILTER SIZE	SCD-1	SCD- 9	SCD-10	SCD-5
305X305x80				
305X610x80				
457X457x80				
535X535x80				
610X610x80				
610X915x80				
610X1220x80	