

AANVRAAGFORMULIER TEXTIELKANALEN

FORMULAIRE GAINES TEXTILES

BEDRIJF/SOCIÉTÉ: _____ CONTACT: _____

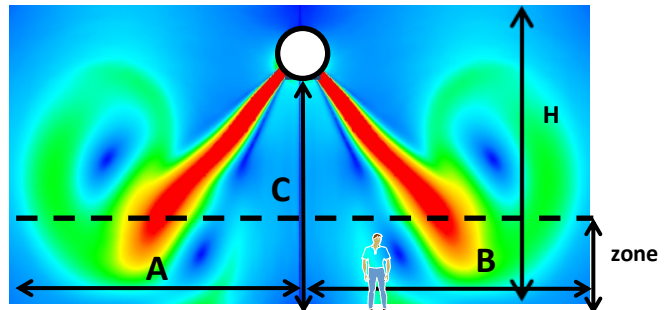
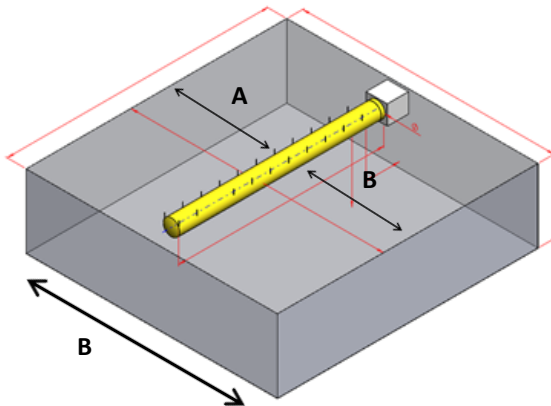
E-MAIL: _____ TEL: _____

Gebruik/Usage: industrie magazijn/magasin clean room tertiair(e) - bureau - kantoor/office

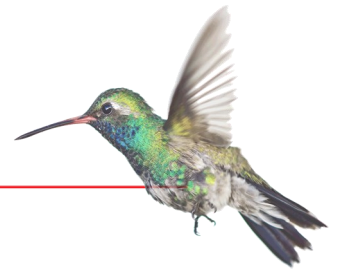
Thermisch/Thermique: koud/froid warm/chaud koud+warm/froid+chaud transport ventilatie/ventilation

Technische gegevens /Données techniques:

- Debiet/Débit (m³/h) _____ m³/h
- Statische druk ter beschikking/pression statique disponible: _____ Pa
- Vochtigheid/humidité: _____ %
- Omgevingstemperatuur/température ambiante zomer/été _____ °C winter/hiver _____ °C
- Uitblaastemperatuur/température de refoulement zomer/été _____ °C winter/hiver _____ °C



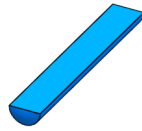
Duct Number	Location	Quantity	Airflow (m ³ /h)	Pressure (Pa)	Room Height (m) H	Length /B (m) L/B	Duct height (C) (m)	Air throws (In the air flow direction)	
								Left (A) (m)	Right (B) (m)
1									
2									
3									
4									
5									
6									
7									
8									
9									



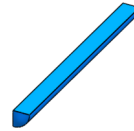
Vorm/Forme:



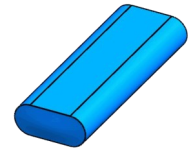
rond/ronde



half rond/demi ronde (1/2)



kwart rond/quart ronde (1/4)



ovaal/ovale

andere vorm / forme différent

Kleur/Couleur - Materia(a):

- wit/blanc zwart/noir grijs/gris blauw/bleu rood/rouge geel/jaune groen/vert oranje/orange
 licht/clair
 donker/foncé

White	Black	Orange RAL 2011
Yellow RAL 1023	Blue RAL 5005	Red RAL 3020
Green RAL 6032	Blue RAL 5012	Grey RAL 7040

Polyester 80g

	White	
Yellow RAL 1023	Blue RAL 5005	Red RAL 3020
Green RAL 6032	Blue RAL 5012	Grey RAL 7040

Polyester 160g

White	Blue	Red
Green	Black	Grey

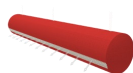
PVC



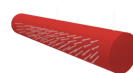
Texi Buz



Texi Jet



Texi Pulse



Texi Soft



Texi Duct



Texi Move

Ophanging/Suspension: (afhankelijk van de vorm/selon la forme)

monokabel galva / monocâble galva
-> rond(e)

monokabel inox / monocâble inox
-> rond(e)

bikabel galva / bicâble galva
-> rond(e) + ova(a)l(e)

bikabel inox / bicâble inox
-> rond(e) + ova(a)l(e)

rail aluminium

-> rond(e) + ova(a)l(e) + 1/2 + 1/4

profi(e)l PVC

-> rond(e) + ova(a)l(e) + 1/2 + 1/4



Bevestiging/Fixation:

- Bestaande kabel/câble existant bestaande rail/rails existant
 Rails en montage te voorzien/rails et raccords à fournir
 Inox accessoires te voorzien/accessoires inox à fournir
 Galva accessoires te voorzien/accessoires galva à fournir